

Kwik-Span TECHNICAL DATA

Self-Supporting Truss System

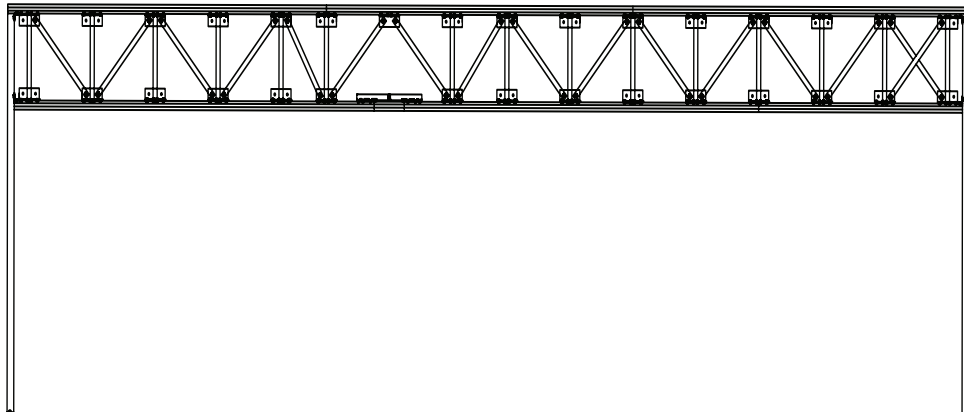
KWIK-WALL... One Source for Wall Systems.

The Kwik-Span self-supporting Truss System systems answer the challenge for space division needs posed by multi-purpose room layouts. Years of continuing research and development have produced many outstanding features.

Pre-engineered movable wall support system independent of existing support systems eliminating the need for structural steel beams. Ceiling anchors and sway bracing needed only for lateral support.

Can be removed and moved to a new location as space needs dictates.

The truss is to be shipped in sections and assembled on site for custom assembly, which meets site conditions.





1.01 WORK INCLUDED

- A. KWIK-SPAN System shall be furnished, installed and serviced by KWIK-WALL's authorized distributor, in compliance with the architectural drawings and specifications contained herein.

1.02 RELATED WORK

- A. Opening Preparation: Proper and complete preparation of the Kwik-Span system opening shall be by others in accordance with ASTM E 557, and shall include floor leveling; plumbness of adjoining permanent walls; substrate and/or ceiling tile enclosures for the Kwik-Span system; and the painting and finishing of trim and other materials adjoining the head and jamb areas of the operable wall. Any deviation of site conditions contrary to approved shop drawings must be called to the attention of the architect.
- B. Insulation: Sound insulation and baffles for the plenum area above the track system, under the permanent floor, inside air ducts passing over or around the operable wall, and in permanent walls adjoining the operable wall system shall be by others, in accordance with ASTM E 557.
- C. Opening Preparation: Proper and complete preparation of the operable wall system opening shall be by others in accordance with ASTM E 557, and shall include floor leveling; plumbness of adjoining permanent walls; and the painting and finishing of trim and other materials adjoining the head and jamb areas of the operable wall.

1.03 SYSTEM DESCRIPTION

- A. The Kwik-Span system is a self-supporting truss system for use with operable partitions.

1.04 QUALITY ASSURANCE

- A. The Kwik-Span system shall be validated by calculations performed by a licensed professional engineer.
- B. The Kwik-Span system shall be installed by KWIK-WALL's authorized distributor in accordance with ASTM E 557.

1.05 REFERENCES

- A. ASTM E 90: Laboratory Measurement of Airborne-Sound Transmission Loss of Building Partitions.
- B. ASTM E 413: Determination of Sound Transmission Class (STC).
- C. ASTM E 557: Architectural Application and Installation of Operable Partitions.
- D. ASTM E 84: Surface Burning Characteristics of Building Materials.
- E. ASTM A 653: Specification for General Requirements for Steel Sheet, Alloy-Coated (Galvannealed) by the Hot Dip Process.
- F. ASTM C 423: Standard Test Method for Sound Absorption and Sound Absorption Coefficients by the Reverberation Room Method.
- G. CCC-W-408A: Federal Specification which applies to Vinyl Coated Wall Coverings.
- H. CFFA-W-101-D: Chemical Fabrics and Film Association Quality Standard for Vinyl Coated Fabric Wall Coverings.

1.06 SUBMITTALS

- A. Manufacturer shall provide prior to fabrication written technical information and related detail shop drawings, which demonstrate that the products comply with contract documents. Include elevations, sections, and details. Indicate dimensions, weights, conditions at openings and at storage areas.
- B. KWIK-WALL shall provide detailed engineering drawings featuring track plan, panel elevation, horizontal and vertical details and beam punching template as required.
- C. KWIK-WALL shall provide written instructions specifying the proper operation and maintenance of the operable wall system.
- D. KWIK-WALL shall provide a color selector demonstrating the manufacturer's selections of the specified finish material. Samples shall consist of actual swatches of the specified finish material.

1.07 DELIVERY, STORAGE AND HANDLING

- A. Panels shall be individually wrapped in a protective plastic covering to keep panels clean during delivery, storage and handling.
- B. Truss system shall be shipped in sections and assembled on site.
- C. Panels shall be stored on edge and above the floor on cushioned blocking in a dry and ventilated area, protected from humidity and temperature extremes.

1.09 WARRANTY

- A. Manufacturer shall warrant each Kwik-Span system and its component parts to be free from defects in material and workmanship for a period of ten (10) years from the date of delivery to the original purchaser when installed by an authorized KWIK-WALL distributor. (Contact your local KWIK-WALL Distributor or KWIK-WALL Company for complete warranty information.) (see actual warranty on Page 12 for details and limitations).



2.01 ACCEPTABLE MANUFACTURER

- A. Self-Supporting truss shall be a Kwik-Span system as manufactured by KWIK-WALL Company. Manufacturers wishing to bid products equal to the product specified must submit to the architect 10 days prior to bidding complete data in support of compliance. The submitting manufacturer guarantees the proposed substituted product complies with the performance items specified and as detailed on the drawings.

2.02 CONSTRUCTION

- A. The supporting truss shall be factory fabricated of steel and aluminum
1. Kwik-Span is attached to the building structure for lateral support only. The Kwik-Span column posts support the load of the truss and partition. Posts are extruded aluminum 6063-T6. Posts are engineered and design to carry the weight of the partition and track systems. PSI load on the floor will be calculated for each system. Detailed anchoring and sway bracing attachment points are noted on shop drawings and supplied by others.
 2. Posts. The space between the post and the adjacent wall shall be fitted with two (2) vinyl gaskets to inhibit sound. These are vinyl bulb seals and are the same construction size and durometer of the vertical bulb seals for the operable wall
 3. Ceiling Anchors and sway bracing. Ceiling anchors and or sway bracing provide lateral support. Blocking for support to be provided by others in accordance with the plans. Kwik-Wall recommends p-100 unistrut or 1/4 x 2 x 2 angle as sway bracing
- B. Weight of System:
1. Truss weight varies per size height and opening. See shop drawings for details.
 2. The floor shall support the weight of the wall system. Weight will vary based on the size of opening STC of wall and height of the structure. Consult a structural engineer for concentrated loads on floors.
 3. See specifications for Kwik-Wall models 2030 and 3030 for panel weights and STC.

2.03 OPERATION

- A. Operation of panels installed in the Kwik-Span system shall be Hinged Pairs, consisting of panels hinged together in groups of two (2) unless otherwise specified. Panels shall be top-supported by one (1) carrier in each panel.
1. See specifications for Kwik-Wall models 2030 and 3030 for panel operation details.
- B. The Kwik-Span system may be disassembled and moved to a similar space to adapt to the end user's changing needs.

PART 3 – EXECUTION

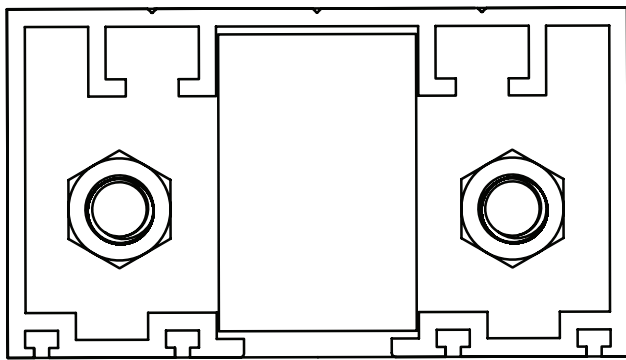
3.01 INSTALLATION

- A. The Kwik-Span system shall be installed by a Kwik-Wall authorized distributor.
- B. The Kwik-Span shall be installed in accordance with Kwik-Wall’s written instructions, shop drawings, and ASTM E 557 installation guidelines.

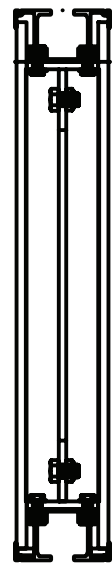
3.02 ADJUSTING AND CLEANING

- A. The Kwik-Span system shall be adjusted and cleaned in accordance with Kwik-Wall’s written instructions

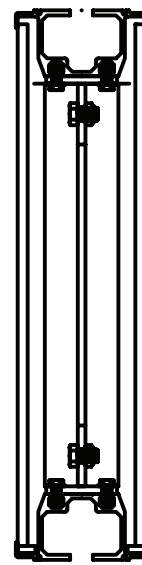
PART 3 - KWIK-SPAN DETAIL



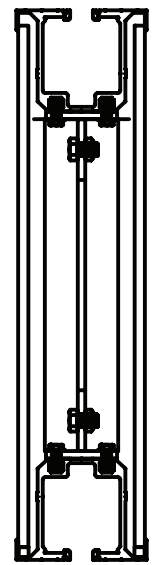
Post & Plate



425

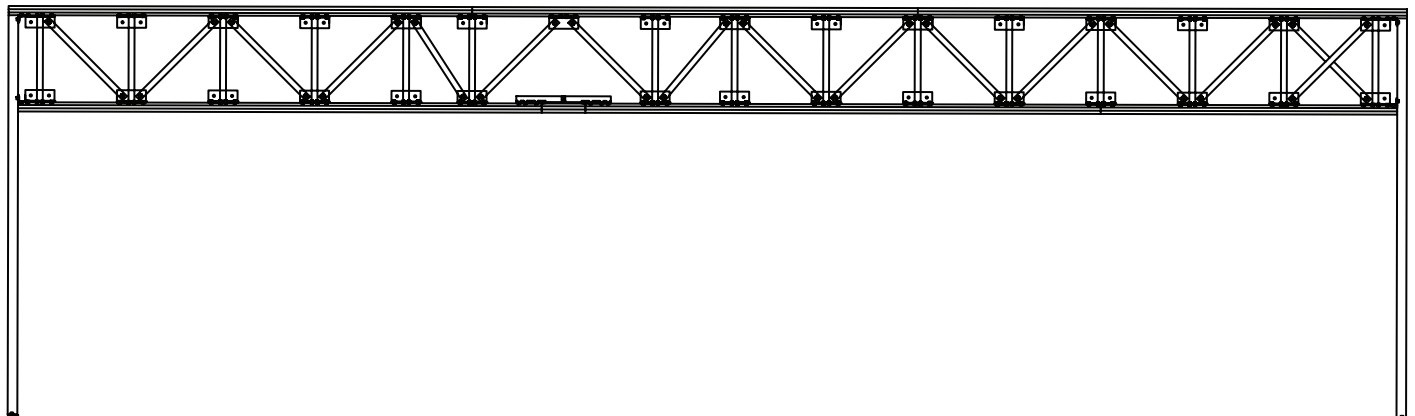


850



850HD

Hinged Pair Track Systems





This page intentionally left blank



Manufacturer shall warrant each Kwik-Span system and its component parts to be free from defects in material and workmanship for a period of ten (10) years from the date of delivery to the original purchaser when installed by an authorized KWIK-WALL distributor. KWIK-WALL Company reserves the rights to have authorized personnel inspect any part alleged to be defective and to refuse any returned material unless the return was previously authorized by KWIK-WALL.

This warranty does not apply to any damage or deterioration caused by abuse or failure to provide reasonable and necessary maintenance. All field applied finishes, accessories or product modifications are specifically excluded under this warranty. KWIK-WALL's liability hereunder is limited to the replacement of any panel or component part found to be defective. Labor charges are the responsibility of the customer.

In order to keep the warranty valid, routine maintenance must be performed in accordance with manufacturer's specifications on the operable wall system. A maintenance log must be maintained indicating dates, type of service performed and the certified Kwik-Wall distributor who performed the service.

KWIK-WALL SHALL NOT BE LIABLE FOR ANY CONSEQUENTIAL OR INCIDENTAL DAMAGES. ALL OTHER WARRANTIES EXPRESSED OR IMPLIED INCLUDING ANY IMPLIED WARRANTY OF MERCHANTABILITY ARE HEREBY EXPRESSLY EXCLUDED.

Some states do not allow the exclusion or limitation of consequential or incidental damages, so the above limitation or exclusion may not apply to you. This warranty gives you specific legal rights, and you may have other rights, which vary from state to state.

Note:

Due to ongoing research and development, some variation may occur in product specifications and design. Please refer to your actual KWIK-WALL shop drawing(s) for exact product dimensions and specifications.

Distributed By:

