

## KWIK-WALL... One Source for Wall Systems.

KWIK-WALL's 4010 features durable high tensile steel skins with a welded heavy steel frame to deliver superior durability and maximum sound control. The 4000 Series panels are especially suited for very tall wall applications, up to 42'-3" (12.9 m) in panel height. The advanced Curve & Diverter operating system allows panels to turn effortlessly through radius type intersections.

KWIK-WALL's 4000 Series operable wall systems answer the challenge for space division needs posed by expansive, high ceiling convention spaces. Over 40 years of continuing research and development have resulted in many outstanding features!

**Durability** - The unitized steel panels are precision welded using a high tensile commercial quality steel. Standard panel finishes are pressure bonded to the steel skins and are welded to the steel frame to create a rigid, unitized panel.

**Simplicity** - Individual Panels are supported by two carriers that are pre-programmed to guide panels effortlessly through radius-turn intersections and stack units. Panels accommodate uneven floor surfaces common to large convention spaces, providing up to 3" [76] of travel for bottom seal actuators

**Appearance** - Panel hardware and operating actuators are concealed within the edge rails, resulting in a clean and uninterrupted appearance on the panel face.

## SOUND CONTROL...

KWIK-WALL's 4000 Series is a part of a complete line of acoustically rated wall systems that are designed and manufactured to meet the most demanding sound control requirements. Sound Transmission Class (STC) ratings from 53 STC to 55 STC have been tested and certified in an independent acoustical laboratory. These STC ratings represent a single number expression of the effectiveness of an operable wall in preventing the passage of transmitted sound in the range\* of 125 Hz to 4,000 Hz.

For assistance with designing room division applications using Operable, Glass, or Accordion wall systems, please contact KWIK-WALL Company or your nearest KWIK-WALL distributor.

\*The average human ear has an audibility range from 125 Hz to 4,000 Hz. Levels in excess of 65 dB to 70 dB are generally too loud for ordinary speech communication. When the sound pressure exceeds 120 dB, it normally passes the threshold of pain.



## PRODUCT SERIES GUIDE

4000	3 <sup>5</sup> / <sub>8</sub> " [92] Panel
3000	3 <sup>5</sup> / <sub>8</sub> " [92] Panel
2000	3" [76] Panel

## 1.01 WORK INCLUDED

- A. Operable wall system shall be furnished, installed and serviced by KWIK-WALL's authorized distributor, in compliance with the architectural drawings and specifications contained herein.

## 1.02 RELATED WORK

- A. Structural Support: Structural support system required for suspending the operable wall shall be designed, installed and pre-punched by others, in accordance with ASTM E 557 and KWIK-WALL's shop drawings.
- B. Insulation: Sound insulation and baffles for the plenum area above the track system, under the permanent floor, inside air ducts passing over or around the operable wall, and in permanent walls adjoining the operable wall system shall be by others, in accordance with ASTM E 557.
- C. Opening Preparation: Proper and complete preparation of the operable wall system opening shall be by others in accordance with ASTM E 557, and shall include floor leveling; plumbness of adjoining permanent walls; substrate and/or ceiling tile enclosures for the track system; and the painting and finishing of trim and other materials adjoining the head and jamb areas of the operable wall. Any permanent wall(s) receiving an adjustable or fixed wall jamb will require internal structural blocking in order to secure the jamb to the permanent wall. Refer to a copy of the shop drawings for additional details.

## 1.03 SYSTEM DESCRIPTION

- A. The operable wall system shall consist of Individual Panels that are top supported by two (2) carriers riding through radius Curve and Diverter type intersections.
- B. The operable wall system shall consist of acoustically rated panels tested in accordance with ASTM test procedures, and shall have achieved an STC rating as specified herein (see "Acoustical Performance" article listed under Part 2 – Products).

## 1.04 QUALITY ASSURANCE

- A. The operable wall shall have been tested in an independent acoustical testing laboratory in accordance with ASTM E 90 and ASTM E 413 test procedures.
- B. The operable wall panel construction and finish materials shall consist of Class A rated materials in accordance with ASTM E 84.
- C. The operable wall shall be installed by KWIK-WALL's authorized distributor in accordance with ASTM E 557.

## 1.05 REFERENCES

- A. ASTM E 90: Laboratory Measurement of Airborne-Sound Transmission Loss of Building Partitions.
- B. ASTM E 413: Determination of Sound Transmission Class (STC).
- C. ASTM E 557: Architectural Application and Installation of Operable Partitions.
- D. ASTM E 84: Surface Burning Characteristics of Building Materials.

- E. ASTM A 653: Specification for General Requirements for Steel Sheet, Alloy-Coated (Galvannealed) by the Hot Dip Process.
- F. ASTM C 423: Standard Test Method for Sound Absorption and Sound Absorption Coefficients by the Reverberation Room Method.
- G. CCC-W-408A-D: Federal Specification, which applies to Vinyl Coated Wall Coverings.
- H. CFFA-W-101-B: Chemical Fabrics and Film Association Quality Standard for Vinyl Coated Fabric Wall Coverings.

## 1.06 SUBMITTALS

- A. KWIK-WALL shall provide written technical information and related detail drawings, which demonstrate that products comply with contract documents for each type of operable partition specified.
- B. KWIK-WALL shall provide detailed engineering drawings featuring track plan, panel elevation, horizontal and vertical details and beam punching template as required.
- C. KWIK-WALL shall provide written test report of the independent acoustical testing laboratory certifying the attainment of the specified STC rating, upon request.
- D. KWIK-WALL shall provide written instructions specifying the proper operation and maintenance of the operable wall system.
- E. KWIK-WALL shall provide a color selector demonstrating the manufacturer's selections of the specified finish material. Samples shall consist of actual swatches of the specified finish material.

## 1.07 DELIVERY, STORAGE AND HANDLING

- A. Panels shall be individually wrapped in a protective plastic covering to keep panels clean during delivery, storage and handling.
- B. Panels shall be stored on edge and above the floor on cushioned blocking in a dry and ventilated area, protected from humidity and temperature extremes.

## 1.08 SEQUENCING / SCHEDULING

- A. Beam Punching: KWIK-WALL shall provide beam punching template drawing detailing the anchor locations for the suspended track system for Drop Rod Mounting, as required for the fabrication and installation of structural overhead support by others.
- B. Track Installation: Scheduling of operable wall track installation shall occur after structural overhead support has been properly and completely fabricated and installed by others.
- C. Panel Installation: Operable wall panel installation shall occur after fixed wall substrate construction is properly and completely installed by others, as required to protect panels from ongoing adjacent construction.

## 1.09 WARRANTY

- A. KWIK-WALL shall warrant each partition and its component parts to be free from defects in material and workmanship for a period of five (5) years from the date of delivery to the original purchaser, when installed by an authorized KWIK-WALL distributor.

\*See actual warranty on back cover for details and limitations.

**2.01 ACCEPTABLE MANUFACTURER**

A. Operable walls shall be Series 4000, Model 4010 Individual Panels / Curve & Diverter as manufactured by KWIK-WALL Company.

**2.02 PANEL CONSTRUCTION**

- A. Panel Dimensions: Standard panel dimension shall be a nominal 3<sup>5</sup>/<sub>8</sub>" [92] thick.
- B. Panel Frame: Steel frame shall be 16-gauge galvanized steel, which meets or exceeds ASTM A 653 requirements. Frame shall be all-welded construction with steel corner supports and cross-bracing reinforcement. Panel frame shall be Class A rated, fire retardant, non-combustible and non-corrosive in accordance with ASTM E 84.
- C. Panel Skins: Panel skins shall be Class A rated in accordance with ASTM E 84. Panel skin material shall consist of minimum 14-gauge tension-leveled galvanized steel skins welded to the steel frame to form a rigid, unitized and structural panel.
- D. Panel Weight: Maximum panel weight shall be 9.5 – 13.3 lb./ft.<sup>2</sup> (46 – 65 kg/m<sup>2</sup>) depending on STC rating, size and options selected.

**2.03 OPERATION**

A. Operation shall be Individual Panels / Curve & Diverter, consisting of Individual Panels that are top supported by two (2) carriers riding through radius Curve and Diverter type intersections.

**2.04 STACK ARRANGEMENTS**

- A. Stack Type: Panel storage configuration shall be (select):
  - 1. Standard Perpendicular Stack: consisting of panels stacking at a 70° angle perpendicular to the wall's installed position.
  - 2. Optional Parallel Stack: consisting of panels stacking at a 20° angle parallel to the wall's installed position.
  - 3. Optional Remote Stack: consisting of panels stacking at a 20° angle located remotely from the wall's installed position, as shown on submitted shop drawings.
- B. Stack Quantity: Panels shall be stored in separate stack areas as required for panel storage.

**2.05 FINISHES**

- A. Standard Unfinished: Unfinished panels consisting of steel skins for field-applied wall covering or painting.
- B. Optional Finish Material Type: Panel finish material shall be Class A rated in accordance with ASTM E 84 consisting of (select from below or delete this section if panels are to be supplied "Unfinished"):
  - 1. Optional Standard Vinyl: consisting of Type I, reinforced vinyl weighing 15 oz./lin. yd. (465 g/lin. m). Standard Vinyl shall meet or exceed CCC-W-408A-D and CFFA-W-101-B quality standards.

- 2. Optional Upgrade Vinyl: consisting of Type II, reinforced vinyl weighing 20 oz./lin. yd. (620 g/lin. m). Upgrade Vinyl shall meet or exceed CCC-W-408A-D and CFFA-W-101-B quality standards.
- 3. Optional Upgrade Fabric: consisting of fade and tear resistant fabric that resists water-based stains weighing 13 oz./lin. yd. (403 g/lin. m).
- 4. Optional Standard Carpet: consisting of acoustically absorbent, non-woven needle punch fibers fused to prevent fraying and unraveling of material weighing 28.5 oz./lin. yd. (884 g/lin. m). Standard Carpet shall achieve a minimum NRC rating of .25 (applied over gypsum substrate) in accordance with ASTM C 423.
- 5. Optional Upgrade Carpet: consisting of acoustically absorbent, non-woven needle punch fibers fused to prevent fraying and unraveling of material weighing 23 oz./lin. yd. (713 g/lin. m). Upgrade Carpet shall achieve a minimum NRC rating of .20 (applied over gypsum substrate) in accordance with ASTM C 423.
- C. Finish Material Supplier: Finish material shall be (select from below or delete this section if panels are to be supplied "Unfinished"):
  - 1. Optional Factory Supplied: from manufacturer's optional selection of finish materials, as specified.
  - 2. Optional Customer Supplied: from customer's selection of finish material, by others, and as approved by KWIK-WALL Company.
- D. Finish Material Application: Finish material shall be (select from below or delete this section if panels are to be supplied "Unfinished"):
  - 1. Optional Factory Applied: by operable wall manufacturer. Customer supplied finish material samples must be submitted to manufacturer for testing and approval prior to acceptance and application.
  - 2. Optional Field Applied: by others.

**2.06 PERIMETER TRIM AND SEALS**

- A. Vertical Trim and Seals: Panels shall have Trimless vertical astragals consisting of an aluminum extrusion containing flexible vinyl seals and shall incorporate a tongue-and-groove-type configuration for positive interlocking with adjacent panels. Vertical trim shall not be permitted on the panel faces, resulting in a minimal groove appearance between adjacent panels.
- B. Horizontal Top Trim and Seals: Top seals shall consist of flexible vinyl sweep seals installed on both sides of the panel. The seals shall consist of a compressed bulb between two (2) fingers of vinyl. Top seal shall be fixed consisting of continuous-contact flexible vinyl, sealing against the bottom flange of the overhead track.

<b>MODEL 4010 PRODUCT GUIDE</b> Standard Steel Skin Construction				
STC Rating	Panel Thickness (nominal)	Max. Panel Weight lb./ft. <sup>2</sup>	Maximum Panel Height	Maximum Wall Width
53	3 <sup>5</sup> / <sub>8</sub> " [92]	9.5 (46 kg/m <sup>2</sup> )	42' - 3" (12.9 m)	Unlimited
55	3 <sup>5</sup> / <sub>8</sub> " [92]	13.3 (65 kg/m <sup>2</sup> )	30' - 0" (9.14 m)	Unlimited

# MODEL 4010 PART 2 - PRODUCT SPECIFICATION

C. Horizontal Bottom Trim and Seals: Bottom seals shall consist of multiple fingers of flexible vinyl for positive contact and sealing with various floor surfaces. Bottom seal type shall be (select):

1. Standard Operable Bottom Seals: consisting of an edge-activated seal using a removable wrench as supplied by manufacturer. Bottom seals shall provide 3" [76] of nominal travel.
2. Optional Adjustable Bottom Seals: consisting of field-adjustable, continuous-contact vinyl sweep seals that allow for  $\frac{3}{4}$ " [19] of nominal adjustment.
3. Optional Automatic Bottom Seals: consisting of self-activated seals providing  $1\frac{1}{2}$ " [38] of nominal travel.

D. Horizontal and Vertical Panel Trim: All exposed panel trim and hinges shall be of one (1) similar color (select):

1. Dark Bronze.
2. Grey.

## 2.07 CLOSURE SYSTEMS

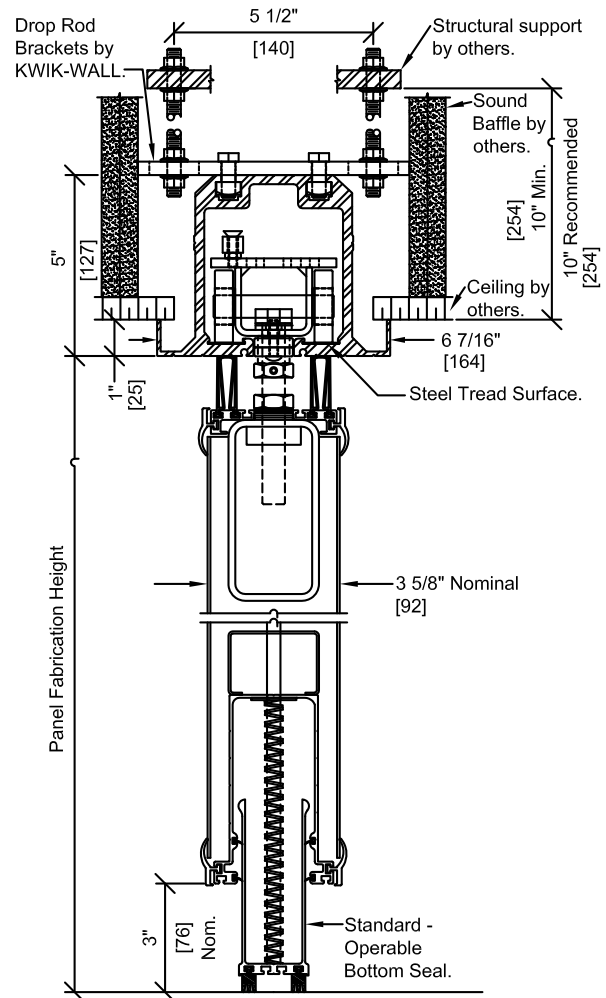
A. Initial Closure System: The lead panel (the first panel exiting the stack) shall form a seal vertically against a rigid wall surface, as accomplished by a (select):

1. Standard Bulb Seal: consisting of continuous-contact, flexible vinyl bulb seals installed along the vertical edge of the lead panel for positive compression against a rigid wall surface.
2. Optional Fixed Starter Jamb: consisting of an aluminum extrusion, which is permanently mounted to a structural wall surface. The Fixed Starter Jamb shall incorporate a tongue-and-groove-type vertical astragal for positive interlocking with the lead panel.
3. Optional Adjustable Starter Jamb: consisting of an aluminum extrusion which is permanently mounted to a structural wall surface and is field-adjustable to compensate for out-of-plumb conditions of the fixed wall. The Adjustable Starter Jamb shall incorporate a tongue-and-groove-type vertical astragal for positive interlocking with the lead panel.

B. Final Closure System: The final closure panel (the last panel exiting the stack) shall form a seal vertically against a rigid wall surface. The type of final closure panel shall be (select):

1. Standard Hinged Panel(s) Closure: consisting of a panel(s) hinged permanently and directly to a permanent wall surface. The Hinged Panel(s) shall be equipped with an adjustable bottom seal, an expander mechanism with a nominal 5" [127] of travel, activated from the face of the panel using a removable wrench, and a flush pull handle on each side of the panel.
2. Optional Expander Panel Closure: consisting of an expander mechanism with a nominal 5" [127] of travel, activated from the face of the panel using a removable wrench. The Expander Panel shall be equipped with an adjustable bottom seal (standard) or (optional) operable bottom seal, and a flush pull handle on one side of the panel.
3. Optional Pocket Door(s): (see "Series 4000 Pocket Door" brochure for complete details and specifications).

**Note:** Optional Automatic Bottom Seal is not available in conjunction



Heavy Duty Curve & Diverter Steel Track System with Standard Steel Wheel Carrier

with Final Closure panel(s).

## 2.08 ACOUSTICAL PERFORMANCE

- A. Certification: The operable wall shall have been tested in an independent acoustical testing laboratory in accordance with ASTM E 90 and ASTM E 413 test procedures.
- B. STC Rating: The operable wall acoustical performance rating shall be based on Standard Steel Skin Construction with a standard rating of 53 STC, or optional rating of 55 STC.

## 2.09 PANEL ACCESSORIES

- A. Accessories including Pass Doors; Single or Double, Keyed Cylinder Locks, Concealed Door Closures, Room Viewers, Exit Signs, Dry Marker Writing Surfaces, Recessed Eraser Trays, Vision Lites, Tack Surfaces and Pocket Doors shall be compatible with other accessories and options, furnished and installed by the

# MODEL 4010 PART 2 - PRODUCT SPECIFICATION

operable wall manufacturer as noted on submitted shop drawings. be completely field adjustable.

## 2.10 TRACK SYSTEM

- A. Type H.D. Curve & Diverter Steel Track: The Curve & Diverter track running surface shall be made of cold-rolled, high carbon steel tread surfaces to facilitate ease of panel movement and operation.
- B. The steel tread surface shall be contained within a continuous structural track housing extruded from aluminum, which prohibits deterioration caused, by rust or corrosion. The track housing shall have a durable anodized clear satin finish, which resists color fading and flaking. The track housing shall utilize grooves and interlocking steel pins for positive alignment of adjacent track sections, and shall be reinforced overhead by heavy-duty steel drop rod brackets. Aluminum track housing shall include an integral nut slot to accept a hardened steel square nut for attaching each drop rod bracket to the top flange of the track. Each drop rod bracket shall have a pair of steel threaded all-rod extending to the overhead structural support.

## 2.11 INTERSECTIONS

- A. The "Curve" and "Diverter" intersections shall be fabricated from structural plate steel  $\frac{3}{8}$ " [10] thick, and bolted together to form a complete assembly. Diverter guide plates, as required for diverting the panel carrier(s) through a radius turn, shall consist of  $\frac{1}{8}$ " [3] structural plate steel and shall

## 2.12 CARRIER SYSTEM

- A. Type H.D. Curve & Diverter Steel Wheel Carrier: Each Curve & Diverter panel shall be top supported by two (2) carriers utilizing  $\frac{5}{8}$ " [16] diameter pendant bolts. Each carrier shall consist of four (4) permanently-lubricated, precision ground ball bearing polished steel wheels, as required for ease of panel movement.

## 2.13 SUSPENSION SYSTEM

- A. Mounting System: The track shall be suspended by steel Drop Rod Brackets with Drop Rods, consisting of adjustable rods of grade 2,  $\frac{3}{8}$ " [10] diameter threaded steel all-rod provided with  $\frac{3}{8}$ " [10] serrated steel nuts.

**MODEL 4010 - TRACK AND CARRIER SELECTION CHART**

Panel Skin Type	Maximum Panel Weight lb./ft. <sup>2</sup>	STC Rating	Panel Fabrication Height*	
			Up to 30' - 0" (9.14 m)	Up to 42' - 3" (12.9 m)
Steel Skins	9.5 (46 kg/m <sup>2</sup> )	53	<b>H.D. and Track Carriers</b>	
Steel Skins	13.3 (65 kg/m <sup>2</sup> )	55		<b>CONTACT KWIK-WALL</b>

### **3.01 INSPECTION**

- A. Proper and complete preparation of the operable wall system opening shall be by others in accordance with the architectural drawings, KWIK-WALL's shop drawings and ASTM E 557. Any deviation of the actual opening from these specifications shall be called to the attention of the architect prior to the installation of the operable wall.
- B. Deficiencies in the operable wall opening shall be corrected by others prior to installation of the operable wall.

### **3.02 INSTALLATION**

- A. The operable wall system shall be installed by KWIK-WALL's authorized distributor.
- B. The operable wall shall be installed in accordance with KWIK-WALL's written instructions, shop drawings and ASTM E 557 installation guidelines.

### **3.03 ADJUSTING AND CLEANING**

- A. The operable wall panels and track system shall be adjusted and cleaned in accordance with KWIK-WALL's written instructions.

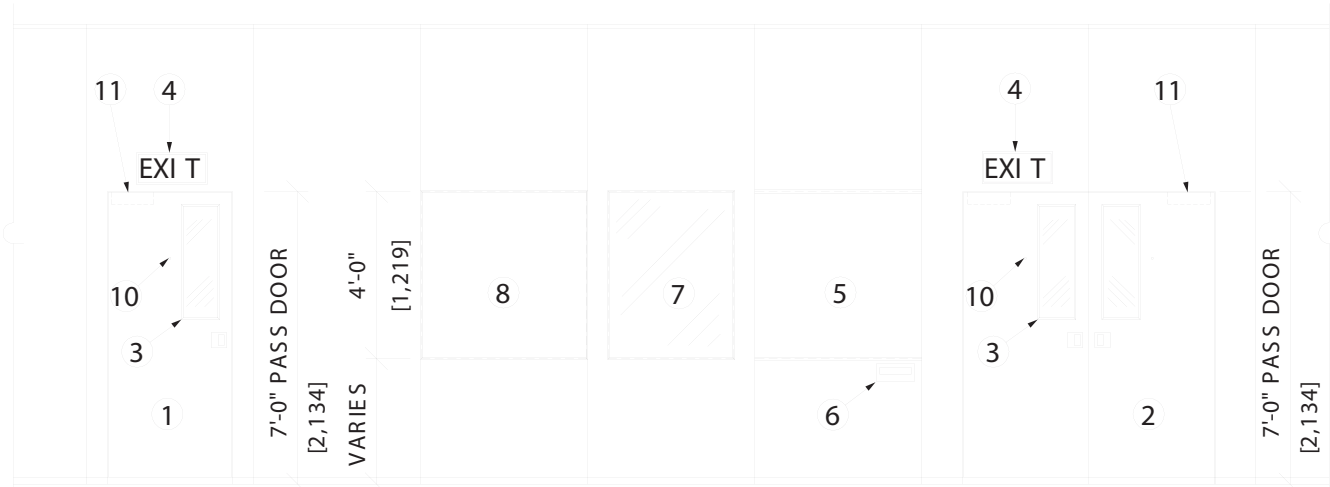
### **3.04 PROTECTION**

- A. The operable wall panels shall be stored in the stacked (retracted) position prior to acceptance by the owner's representative.

### **3.05 DEMONSTRATION**

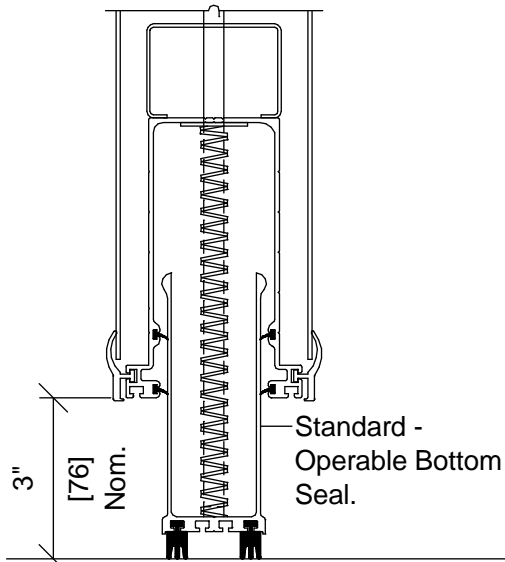
- A. KWIK-WALL's authorized distributor shall demonstrate proper operation and explain proper and necessary maintenance requirements of the operable wall system to the owner's representative.

KWIK-WALL offers a full complement of accessories for customizing any operable wall system to meet the specific needs of the most demanding project.

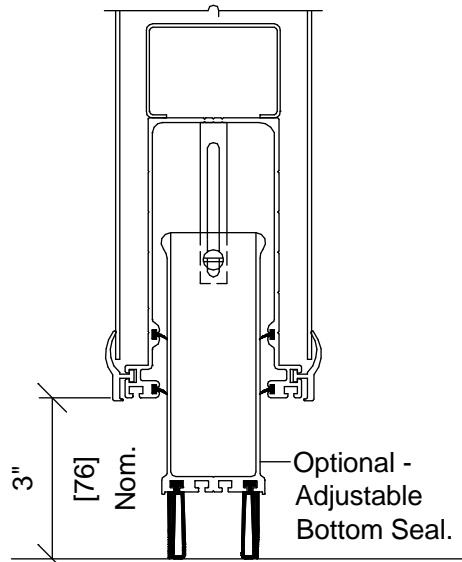


**ACCESSORIES**

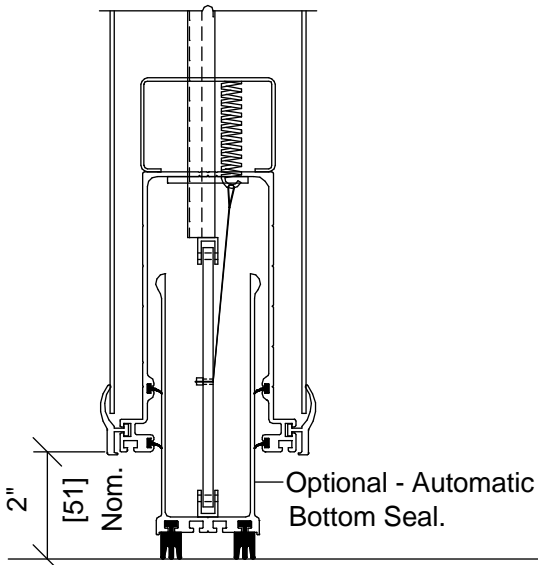
1. Pass Door. Single pass doors shall be supplied with matching or contrasting face materials. Standard hardware shall include flush pull handle with an adjustable roller latch.
2. Pass Door. Double pass doors shall be supplied with matching or contrasting face materials. Standard hardware shall include flush pull handles with an adjustable roller latch.
3. Pass Door Vision Lite. Window opening shall be 10" [254] x 30" [762] or 28" [711] x 30" [762] and shall be supplied with plexiglass or be furnished open for field glazing.
4. Exit Sign. Exit signs shall be illuminated and flush mounted by the manufacturer, as designated on submitted shop drawings.
5. Writing Surface. Vitracite chalkboard or liquid chalk surfaces shall be furnished and installed as full height panel faces, flush mounted 4'-0" [1,219] x 4'-0" [1,219] sections, or as designated on submitted shop drawings.
6. Recessed Chalktray. Chalktrays shall be constructed of durable injection molded thermo-plastic, and shall be flush mounted by the manufacturer.
7. Panel Vision Lite. Standard width panels shall be furnished with 3'-0" [914] x 4'-0" [1,219] opening and supplied with plexiglass or open for field glazing, as designated on submitted shop drawing.
8. Tack Surface. Tackboards with vinyl covering shall be furnished as surface mounted 4'-0" [1,219] x 4'-0" [1,219] section, or as designated on submitted shop drawing.
9. Pocket Door (Not shown).
10. Peep Hole. One-way viewer allows you to see into a room before you open the door.
11. Concealed Door Closure. Door closers control the opening and closing of a door. The closure and latch speed of the doors shall be field adjustable.



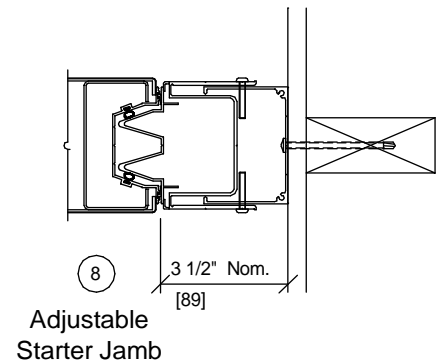
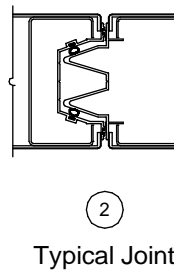
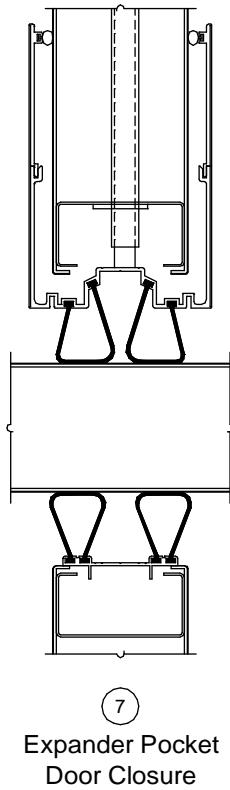
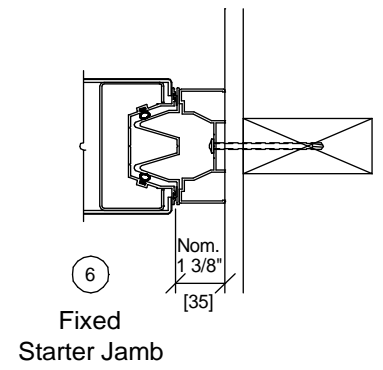
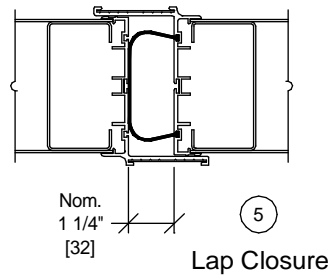
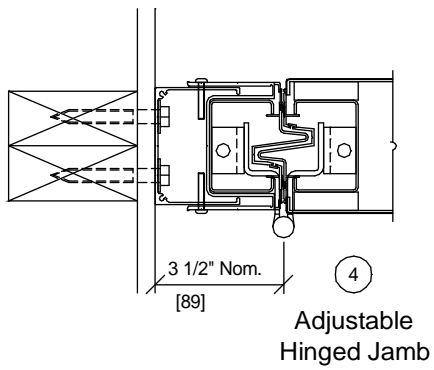
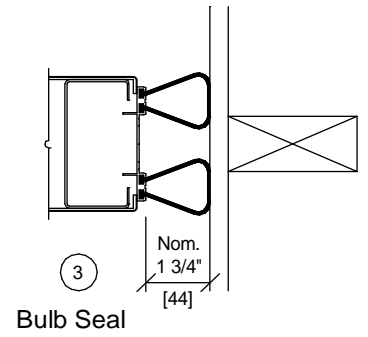
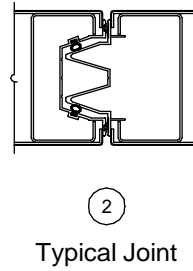
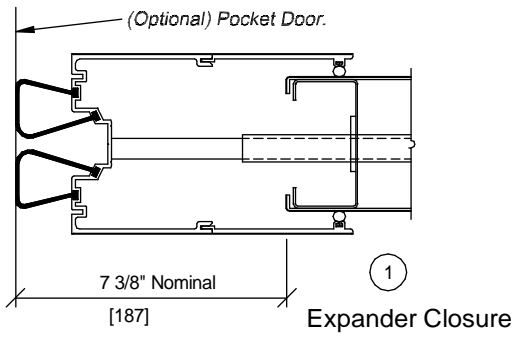
Standard Operable Bottom

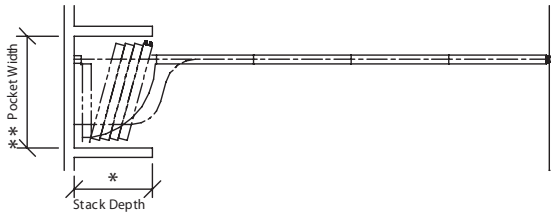


Optional Adjustable Bottom Seal



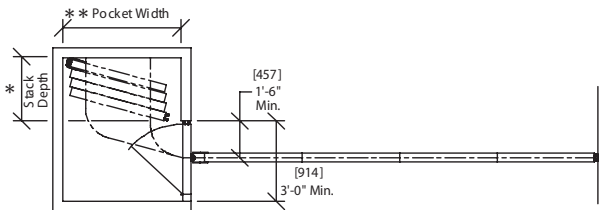
Optional Automatic Bottom Seal





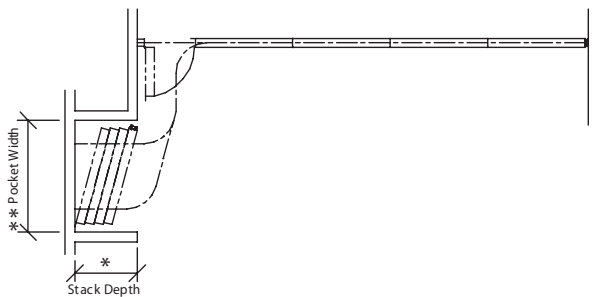
## Standard Perpendicular Stack

Perpendicular stacking allows individual panels to be located at one or both ends and stored perpendicular, at a 20° angle, to the wall's installed position.



## Optional Parallel Stack

In contrast to perpendicular stacking, Individual Panel arrangements may also be stored parallel, at a 20° angle, to the wall's installed position, at one or both ends.



## Optional Remote Stack

For more complex wall system layouts, or when space or other room constraints dictate, Individual Panels may be located remotely from the wall's installed position. Panels stored in a remote location will stack at a 20° angle from the back wall of the pocket.

## Stack Depth\*

The overall depth of the stack area, as required for panel storage, is dictated by the total number of panels in the wall system. KWIK-WALL's Model 4010 panels require an average average stack depth of 4½" [114] per panel. To determine the stack depth, calculate as follows:

$$\text{Number of Panels} \times 4\frac{1}{2}" [114] + 1' - 6" [456]$$

\*Note: Additional stack depth is required for wall systems containing the following type of panels:

- Expander Panel Closure: 1" [25.4]
- Hinged Panel(s) Closure: 4" [102]
- Pocket Door(s): 6" [152]

\*\*Note: For wall systems that include Pocket Doors, please reference KWIK-WALL's "4000 Series Pocket Doors" brochure for pocket layout dimensions and applications.

## Pocket Width\*\*

The width of the pocket is determined by the widest panel in the wall run. For specification purposes, assume the widest panel is 5'-0" (152 cm) maximum. Wall systems that utilize Automatic type bottom seals will require extra pocket width to allow clearance for the actuator that protrudes from the bottom of the lead panel. Pocket width may be calculated as follows:

*If Adjustable, Floating or Operable Bottom Seals are specified:*

**Panel Width + 1' - 0" [305]**  
(allows 6" [152] for hand clearance on each side)

*If Automatic Bottom Seals are specified:*

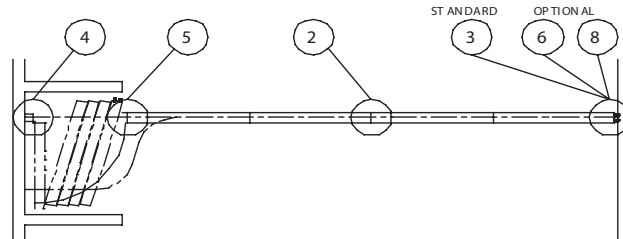
**Panel Width + 10" [254]**  
(for actuator clearance on one side)

plus

**6" [152]**  
(for hand clearance on one side)

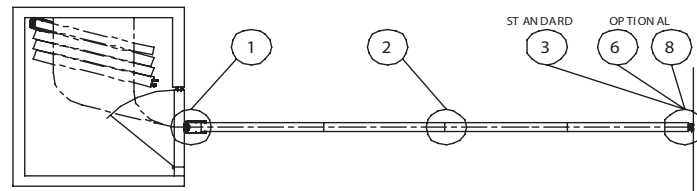
## Standard Hinged Panel Closure

The final closure configuration is accomplished by panel(s) which is hinged permanently and directly to a structural wall. The hinged panel features a standard adjustable bottom seal and includes a flush pull handle on each side of the hinged panel.



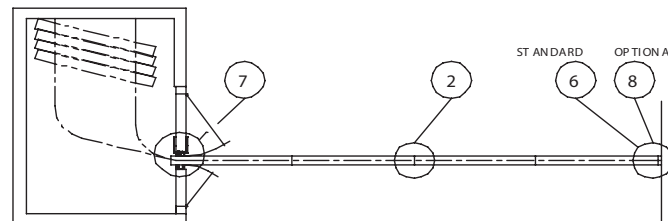
## Optional Expander Panel Closure to Face of Pocket Door

The final closure panel is equipped with an expander saddle on the vertical rail which mechanically telescopes outward to create a positive contact seal with a rigid wall surface. The expansion of the expander saddle is activated by inserting a wrench into the panel face. The expander panel is equipped with a flush pull handle and standard adjustable-type bottom seal. As an option, operable bottom seals can be provided. Expander Panel Closure can be used in conjunction with perpendicular or parallel stacking arrangements.



## Optional Pocket Doors

The pocket door is equipped with an expander mechanism in the same way as the more common expander panel. Rather than being located on a wall panel, the expander saddle is integrated into a pocket door panel and is compressed against the last panel exiting the stack. The pocket doors are provided with fixed bottom seals as a factory standard, a foot bolt, and a flush pull handle in each panel.



Note: Complete details referenced by numbers 1 - 8 above can be found on page 8

## MODEL 4010 OPERABLE WALL LIMITED WARRANTY

KWIK-WALL Company warrants each operable wall and its component parts to be free from defects in material and workmanship for a period of five (5) years from date of delivery to the original purchaser, when installed by an authorized KWIK-WALL distributor. KWIK-WALL Company reserves the right to have authorized personnel inspect any part alleged to be defective and to refuse any returned material unless the return was previously authorized by KWIK-WALL.

This warranty does not apply to any damage or deterioration caused by abuse or failure to provide reasonable and necessary maintenance. All field applied finishes, accessories or product modifications are specifically excluded under this warranty. KWIK-WALL's liability hereunder is limited to the replacement of any partition or component part found to be defective. Labor charges are the responsibility of the customer.

***KWIK-WALL SHALL NOT BE LIABLE FOR ANY INCIDENTAL OR CONSEQUENTIAL DAMAGES. ALL OTHER WARRANTIES EXPRESSED OR IMPLIED INCLUDING ANY IMPLIED WARRANTY OF MERCHANTABILITY ARE HEREBY EXPRESSLY EXCLUDED.***

Some states do not allow the exclusion or limitation of consequential or incidental damages, so the above limitation or exclusion may not apply to you.

This warranty gives you specific legal rights, and you may also have other rights which vary from state to state.

**Note:**

Due to ongoing research and development, some variation may occur in product specifications and design. Please refer to your actual KWIK-WALL shop drawing(s) for exact product dimensions and specifications.

***Distributed By:***

