

# Upgrade Vinyl Selector



**Kwik-Wall**

*MOVEABLE WALL SYSTEMS*



**curtition**

*A Division of KWIK-WALL.*

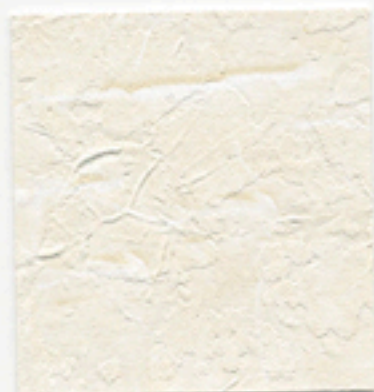


CHOOSE QUALITY. CHOOSE EXCELLENCE. **CHOOSE KWIK-WALL.**

# Kwik-Wall



PKW-55 Grassland®  
Glacier



PKW-59 Plaza®  
Soft White



PKW-63 Manzanita®  
St. John's Wort



PKW-56 Reynolds®  
Hedron



PKW-60 Grassland®  
Prairie



PKW-64 Grassland®  
Tumbleweed



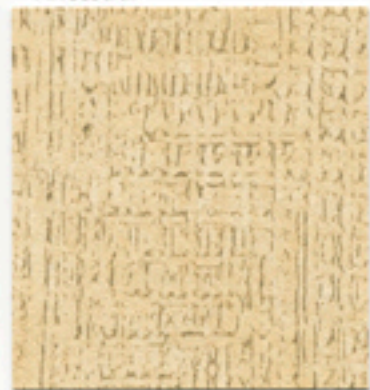
PKW-57 Linden®  
Ancestral



PKW-61 Reynolds®  
Aperitif



PKW-65 Plaza®  
Harvest



PKW-58 Gridlock®  
Outback



PKW-62 Reynolds®  
Sandal



PKW-66 Plaza®  
Light Chamois



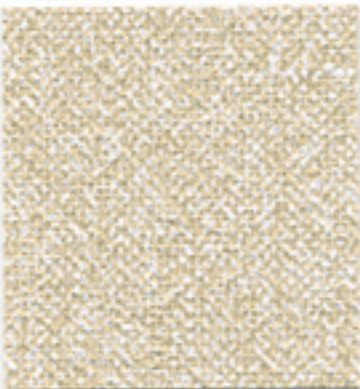
PKW-67 Gossamer<sup>®</sup>  
Shell



PKW-71 Manzanita<sup>®</sup>  
Maple



PKW-75 Grassland<sup>®</sup>  
La Mesa



PKW-68 Linden<sup>®</sup>  
Porcelain



PKW-72 Manzanita<sup>®</sup>  
Thistle



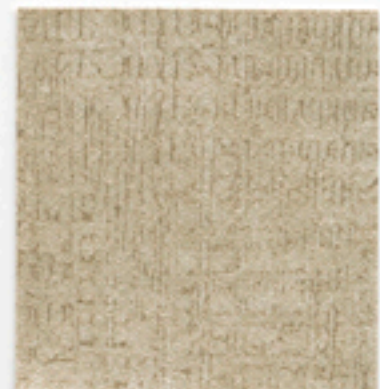
PKW-76 Manzanita<sup>®</sup>  
Laurel



PKW-69 Linden<sup>®</sup>  
Ascot



PKW-73 Gossamer<sup>®</sup>  
Quartz



PKW-77 Gridlock<sup>®</sup>  
Boulevard



PKW-70 Gossamer<sup>®</sup>  
Blush



PKW-74 Linden<sup>®</sup>  
Marlborough



PKW-78 Linden<sup>®</sup>  
Dover Gray

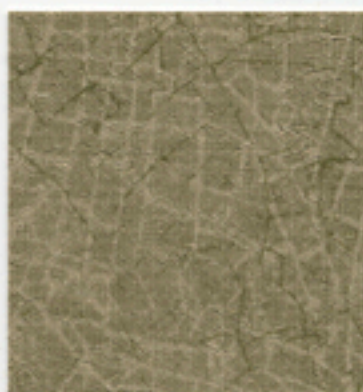
# Premium **Offering**



PKW-79 Muratone<sup>®</sup>  
Marble Dust



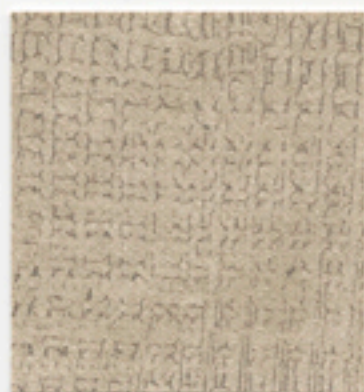
PKW-83 Muratone<sup>®</sup>  
Neutral



PKW-87 Reynolds<sup>®</sup>  
Uptown



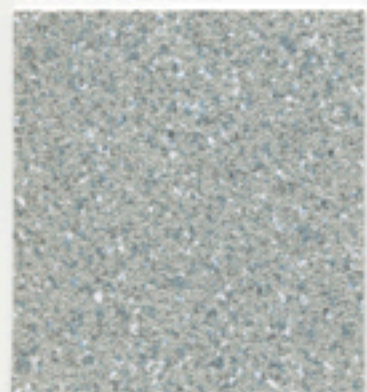
PKW-80 Muratone<sup>®</sup>  
Lodestone



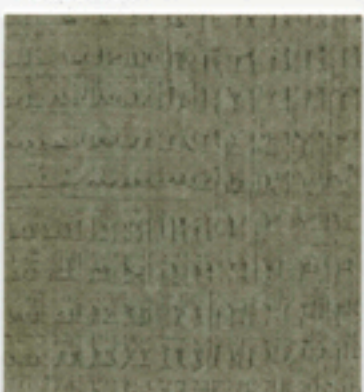
PKW-84 Gridlock<sup>®</sup>  
Roadblock



PKW-88 Reynolds<sup>®</sup>  
Brick



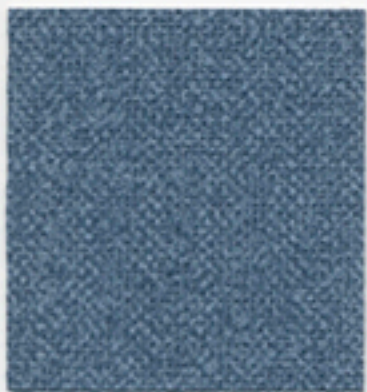
PKW-81 Muratone<sup>®</sup>  
Frost



PKW-85 Gridlock<sup>®</sup>  
Scenic Point



PKW-89 Gridlock<sup>®</sup>  
Indian Trail



PKW-82 Linden<sup>®</sup>  
Maypole



PKW-86 Reynolds<sup>®</sup>  
Titan



PKW-90 Reynolds<sup>®</sup>  
Mesquite



**Kwik-Wall**

*MOVEABLE WALL SYSTEMS*

Patterns and Colors shown on this card are provided  
as standard premium selections to expedite  
the production of walls

Patterns and Colors not shown on this card may be  
submitted to KWIK-WALL for approval

All patterns in this collection are Type II only

Please refer to the KWIK-WALL Standard Pattern Collection  
for additional selections

---

[www.kwik-wall.com](http://www.kwik-wall.com)



# Kwik-Wall

MOVEABLE WALL SYSTEMS

	U.S. UNITS	METRIC UNITS
<b>Total Weight</b>	21.0 OZ PLY	651 g PLM
<b>Roll Width</b>	53/54 in.	134/137 cm
<b>Gauge</b>	24 Mils	0.61 mm
<b>Fabric</b>	Osnaburg	
<b>Tensile (Min.)</b>	50 x 55 lbf	222 x 245 N
<b>Tear (Min.)</b>	25 x 25	
<b>Federal Spec</b>	CCC-W-408A. TYPE II	
<b>CFAA Spec</b>	CFFA-W-101-D, TYPE II	
<b>Fire Testing</b>	NFPA 101 <sup>®</sup> , Life Safety Code <sup>®</sup> NFPA 255 (UL 723, CAN S102M) Tunnel Test <sup>1</sup> Class A Rating NFPA 286 Corner Burn Test <sup>2</sup> Meets requirements for Flame Spread, Smoke Developed and Flashover U.L. Labeled and Listed	
<b>Repeat</b>	Vertical	N/A
	Horizontal	N/A
	Match information	Random Match, Reverse Hang

<sup>1</sup> When applied to GRC board with A-848-B adhesive

<sup>2</sup> When applied to 5/8" type-X-gypsum board with A-848-B adhesive

The flammability testing data, conclusions and recommendations in this report relate solely to measurement and description of the properties of materials, products, or systems in response to the heat and flame under controlled laboratory conditions and should not be considered or used for the description, appraisal, or regulations of the fire hazard of materials, products, or systems under actual fire conditions.

1010 East Edwards St., Springfield, IL 62703 • 800-280-5945 • [www.kwik-wall.com](http://www.kwik-wall.com)



**curtition**  
A Division of KWIK-WALL.